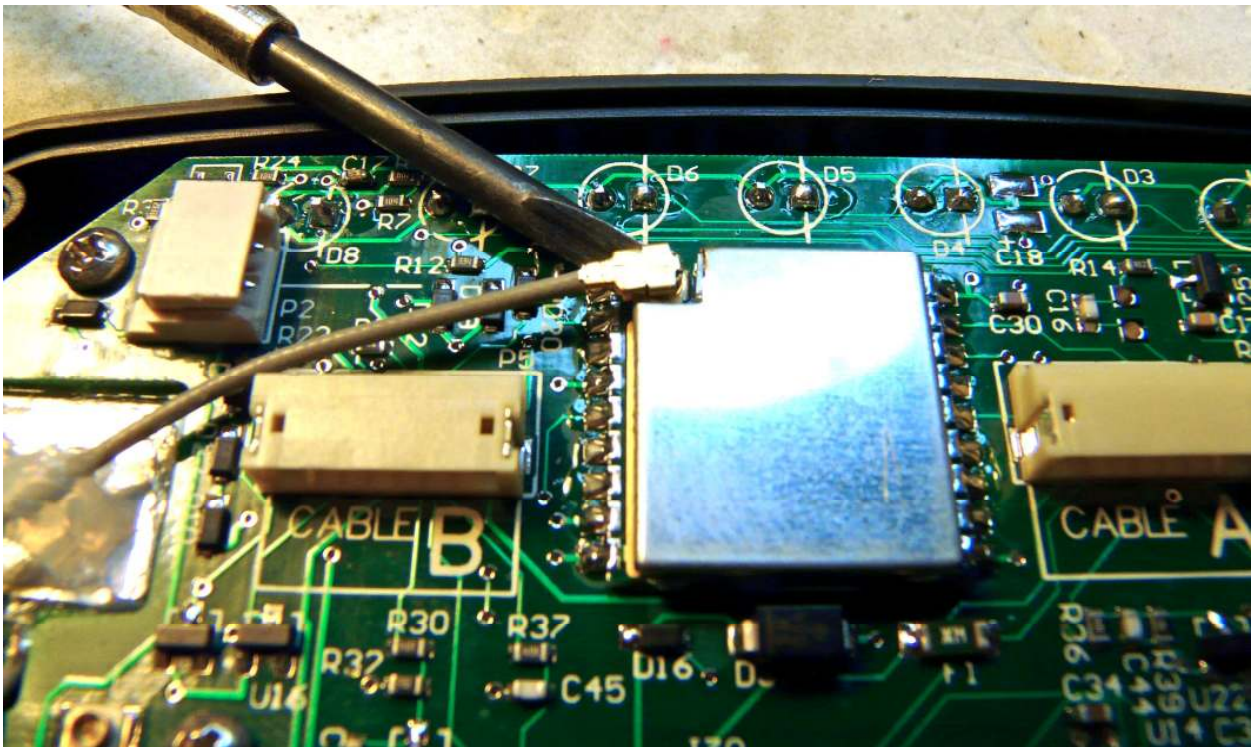
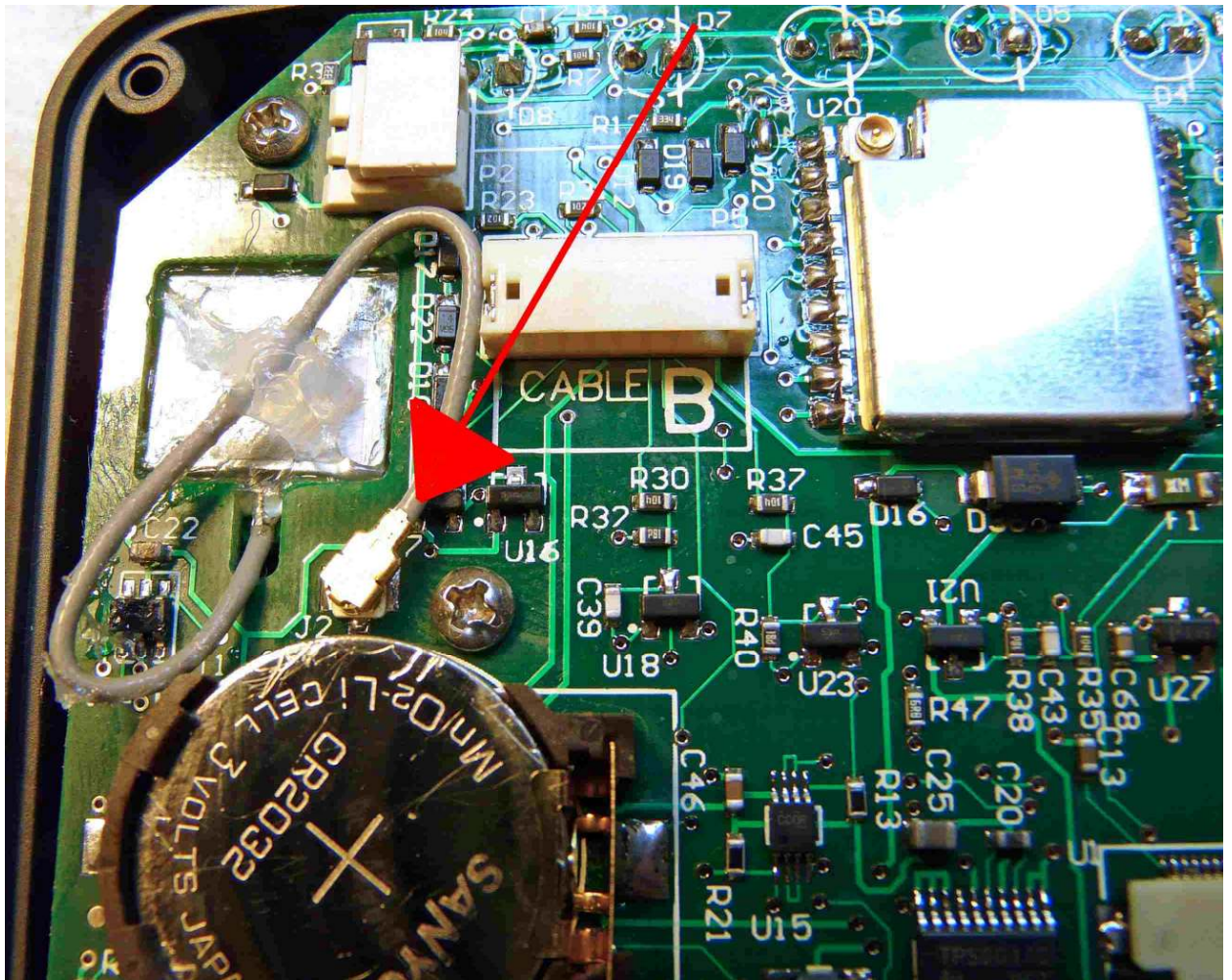


GPX Pro – Installation of External Antenna

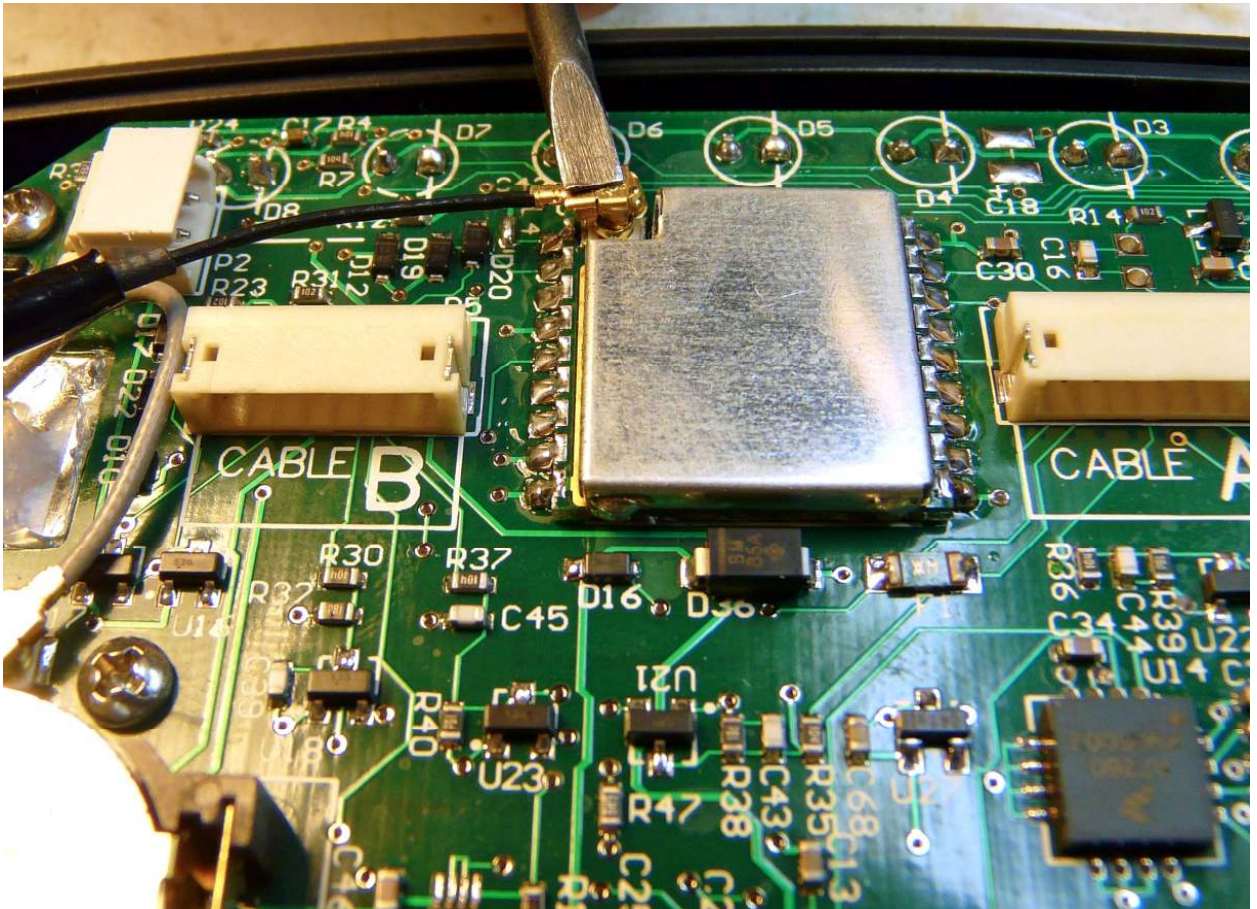
- 1) If wired to your vehicle, disconnect the A and B cables.
- 2) Open the GPX by removing the 4 small screws in the rear cover.
- 3) Firmly grasp the black and red wires of the internal battery, pull carefully, and disconnect the battery.
- 4) Insert a small flat-tipped screwdriver under the internal antenna cable where it connects to the large silver rectangular GPS module, and twist the screwdriver to “pop” the antenna connector off:



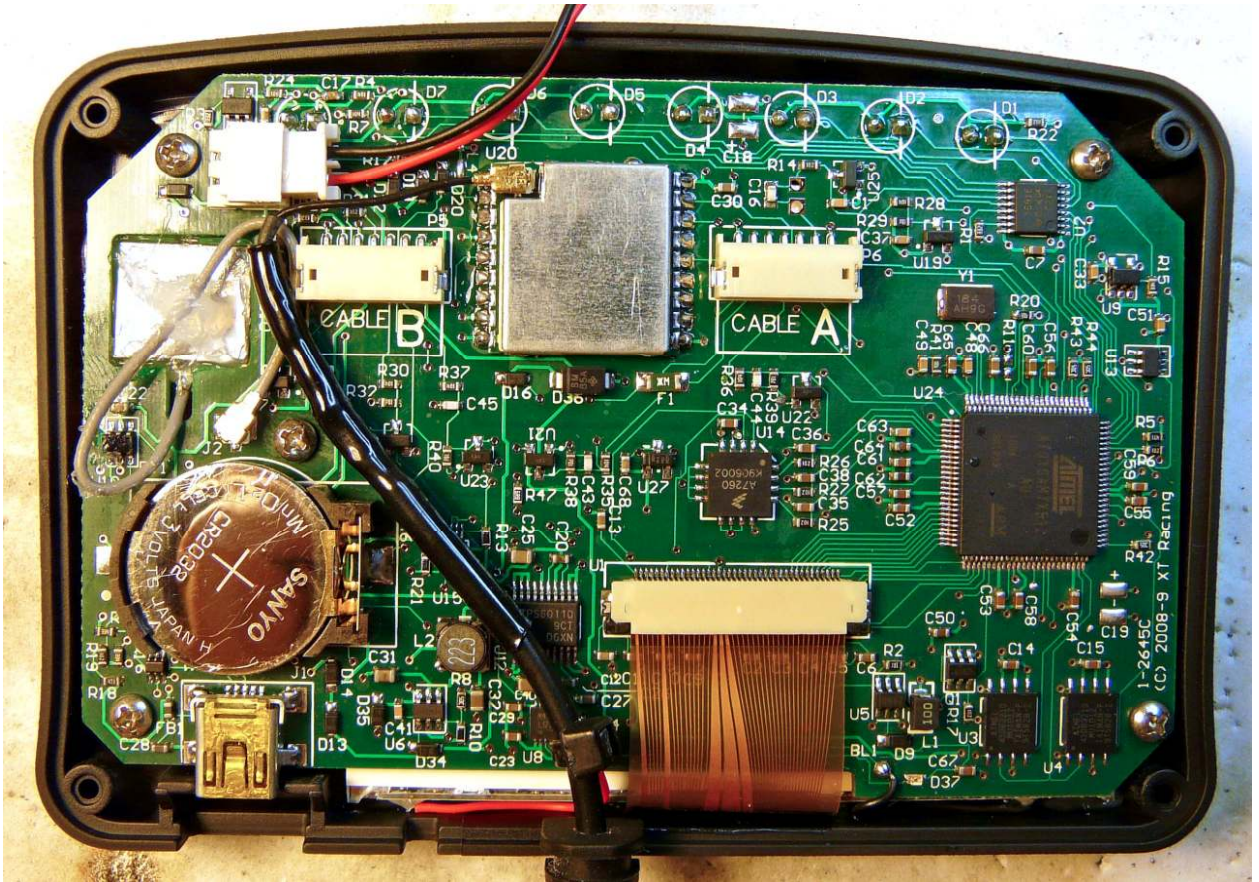
- 5) Position that connector that is now loose over the corresponding receptacle near the CR2032 battery, and push down to mate it to the receptacle:



- 6) Take the connector end of the external antenna, and push down to mate it to the connector of the GPS module:



- 7) Route the external antenna cable down toward the lower edge of the GPX, and remove one of the blank rubber grommets. The rubber grommet on the external antenna cable will now take its place:



- 8) Re-install the battery connector – it is polarized and can only be inserted one way. Firmly push it in to insure a secure connection.
- 9) Reconnect A and B cables as necessary. Reinstall the rear cover.